

***BILLION RISE**

***ACTIVEWEAR S/S 21
SUSTAINABLE
COLLECTION**

As ethics become increasingly important to consumers, sustainability is the industry's greatest challenge.

Billion Rise are pleased to present one of the most comprehensive range of sustainable fabrics, incorporating various different eco-conscious raw materials.

We guarantee full transparency and traceability on each different product offering customers reassurance of the supply chain.

RECYCLED POLYESTER

All of our fabrics are made from post consumer plastic bottles which are fully certified by third parties.





FABRIC REFERENCE : DWB3100
COMPOSITION : 75% RECYCLED POLYESTER & 25% LYCRA
WIDTH, WEIGHT : 173CM / 175G/M2
PRODUCT, GG : POWER NET 32GG



FABRIC REFERENCE : ZA4099

COMPOSITION : 95% RECYCLED POLYESTER & 5% ELASTANE

WIDTH, WEIGHT : 140CM / 210G/M2

PRODUCT, GG : JERSEY 28GG



FABRIC REFERENCE : ZA1756

COMPOSITION : 90% RECYCLED POLYESTER & 10% ELASTANE

WIDTH, WEIGHT : 147CM / 150G/M2

PRODUCT, GG : JERSEY 28GG

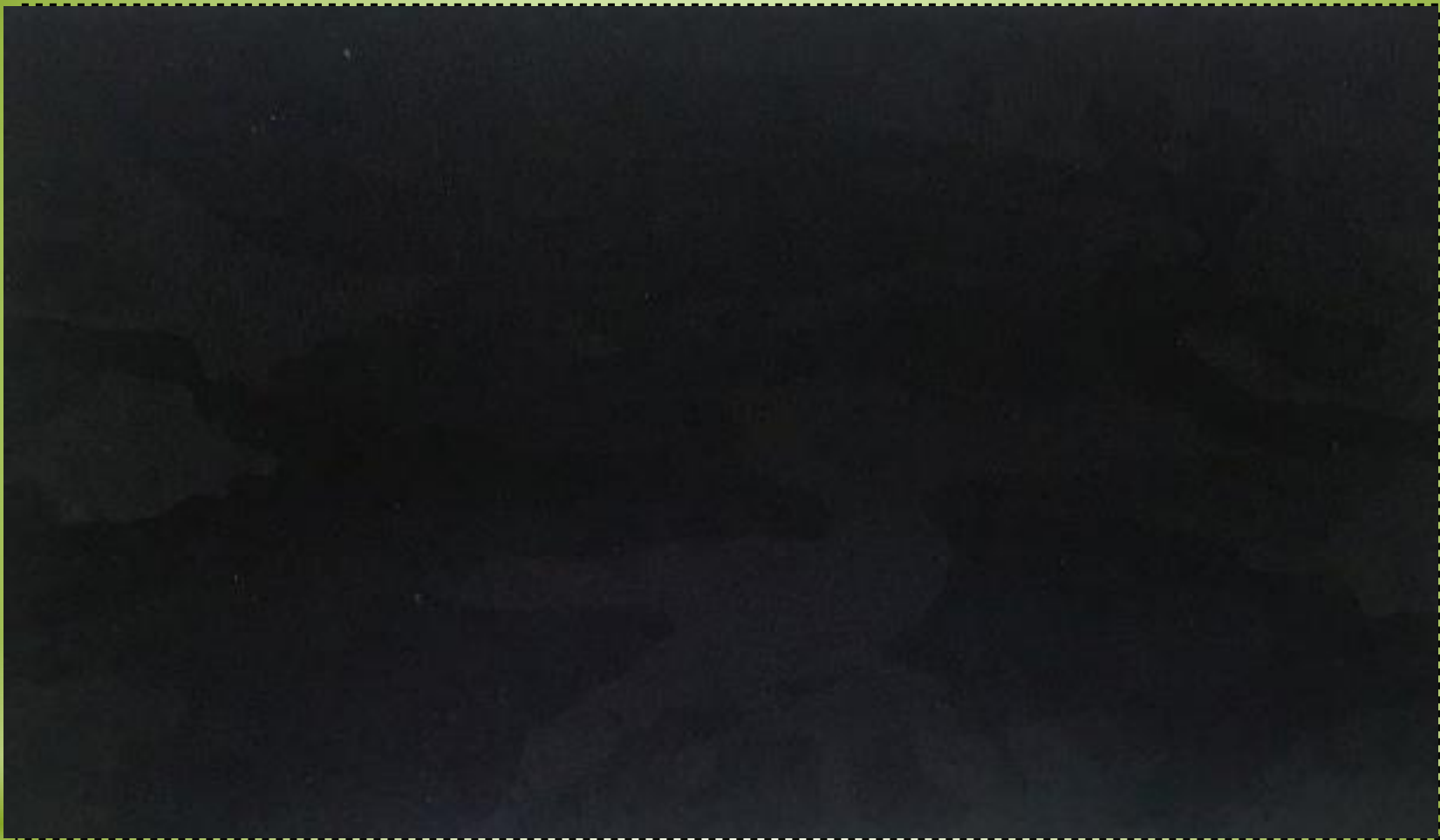


FABRIC REFERENCE : KFZB8019

COMPOSITION : 86% RECYCLED POLYESTER & 14% ELASTANE

WIDTH, WEIGHT : 119CM / 170G/M2

PRODUCT, GG : ELASTANE RIBBING 32GG



FABRIC REFERENCE : KFZA6094

COMPOSITION : 79% RECYCLED POLYESTER & 21% ELASTANE

WIDTH, WEIGHT : 137CM / 240G/M2

PRODUCT, GG : ELASTANE INTERLOCK 28GG

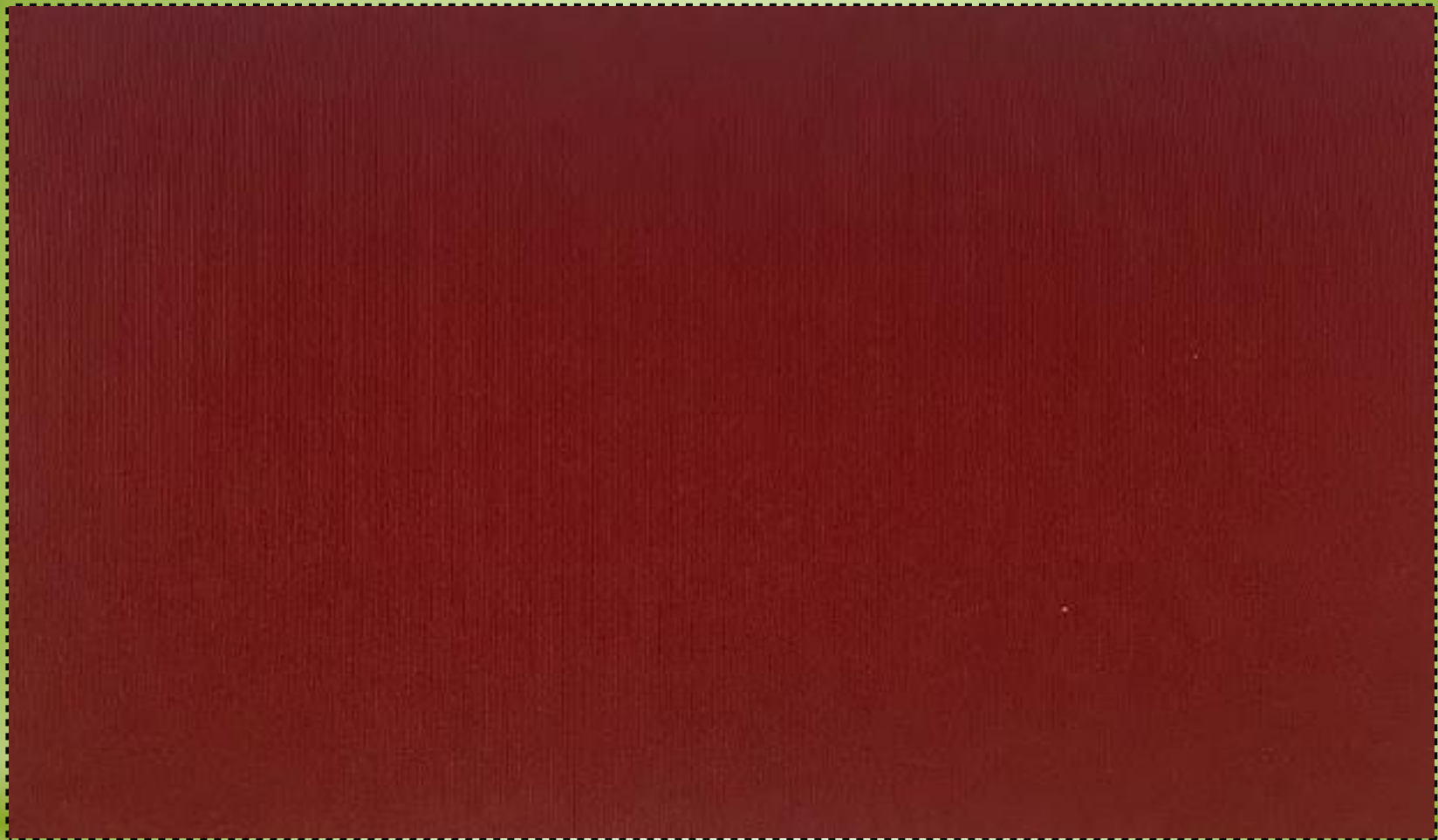


FABRIC REFERENCE : KFZH1801-1

COMPOSITION : 52% RECYCLED POLYESTER, 31% POLYESTER & 17% ELASTANE

WIDTH, WEIGHT : 140CM / 120G/M2

PRODUCT, GG : STRIPE JERSEY 36GG



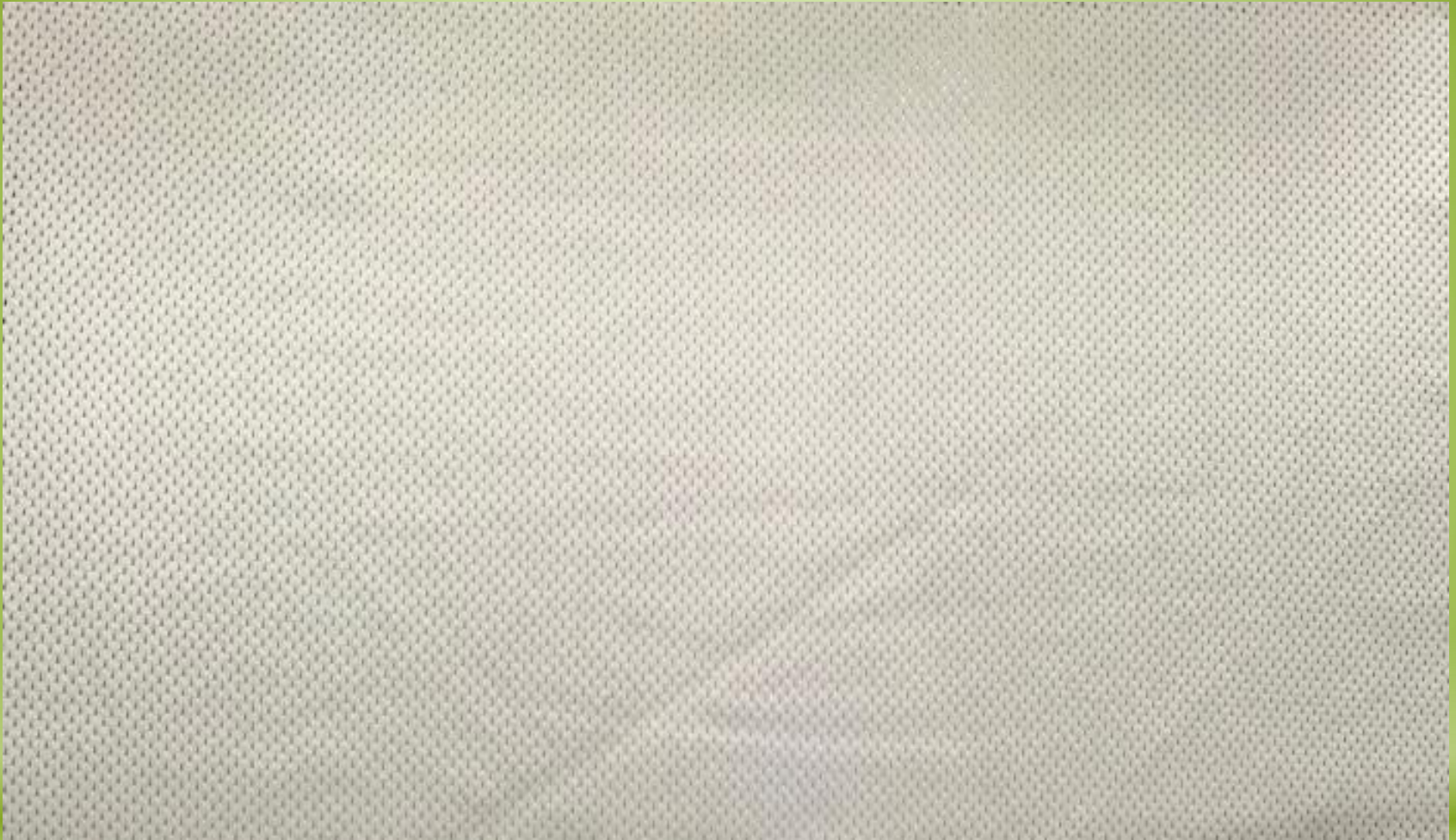
FABRIC REFERENCE : SZK8020F

COMPOSITION : 48% CD - POLYESTER, 44% RECYCLED POLYESTER & 8% ELASTANE

WIDTH, WEIGHT : 127CM / 255G/M2

PRODUCT, GG : BRUSHED INTERLOCK 24GG

COMMENTS :



FABRIC REFERENCE : KFZA4114

COMPOSITION : 86% RECYCLED POLYESTER, 6% POLYESTER & 8% ELASTANE

WIDTH, WEIGHT : 137CM / 120G/M2

PRODUCT, GG : AIRTEX JACQUARD 28GG



FABRIC REFERENCE : KFZA7035

COMPOSITION : 73% RECYCLED POLYESTER, 16% POLYESTER & 11% ELASTANE

WIDTH, WEIGHT : 137CM / 220G/M2

PRODUCT, GG : SPACER 28GG

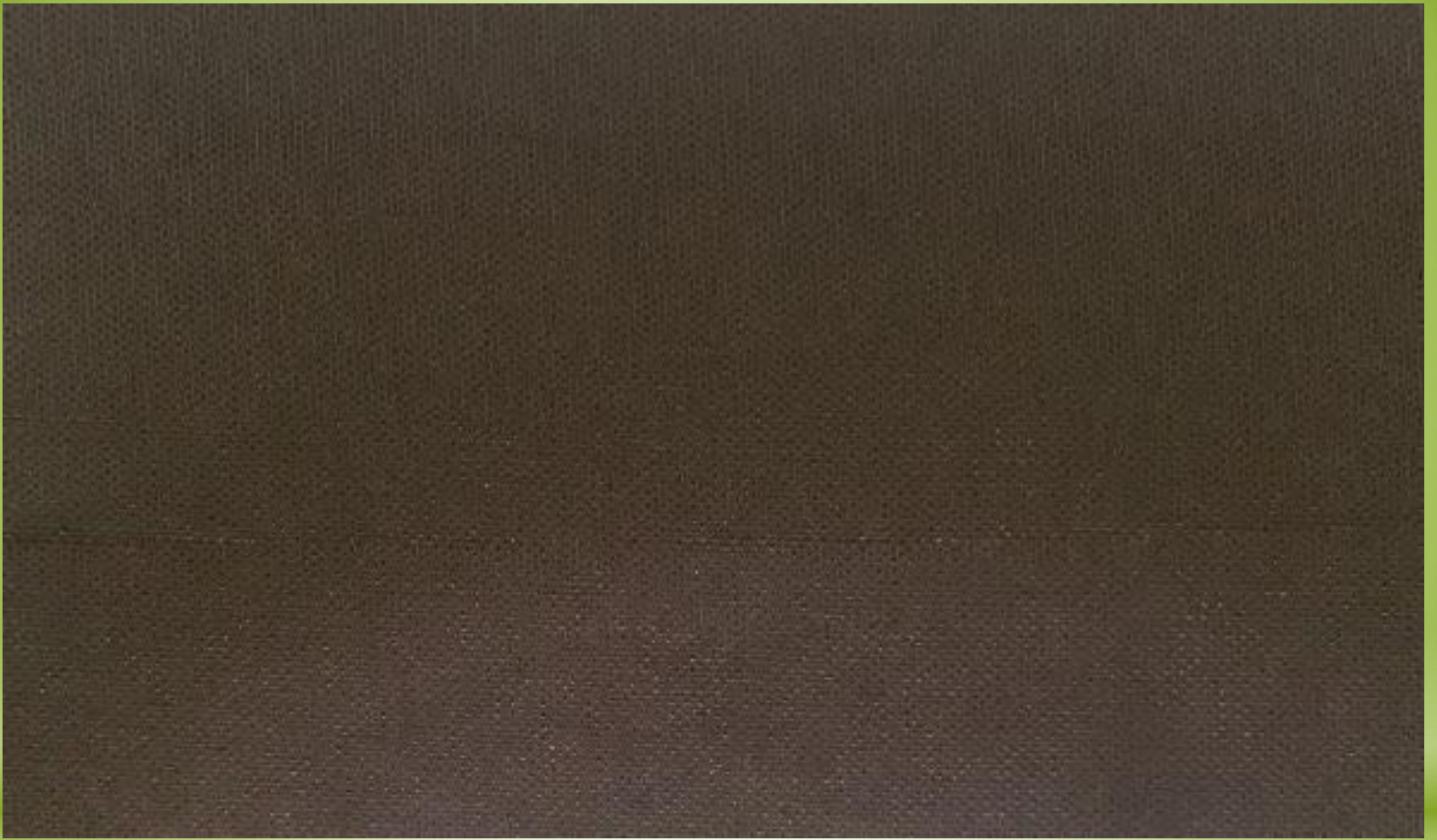


FABRIC REFERENCE : ZA6055

COMPOSITION : 84% RECYCLED POLYESTER & 16% ELASTANE

WIDTH, WEIGHT : 152CM / 200G/M2

PRODUCT, GG : INTERLOCK 28GG

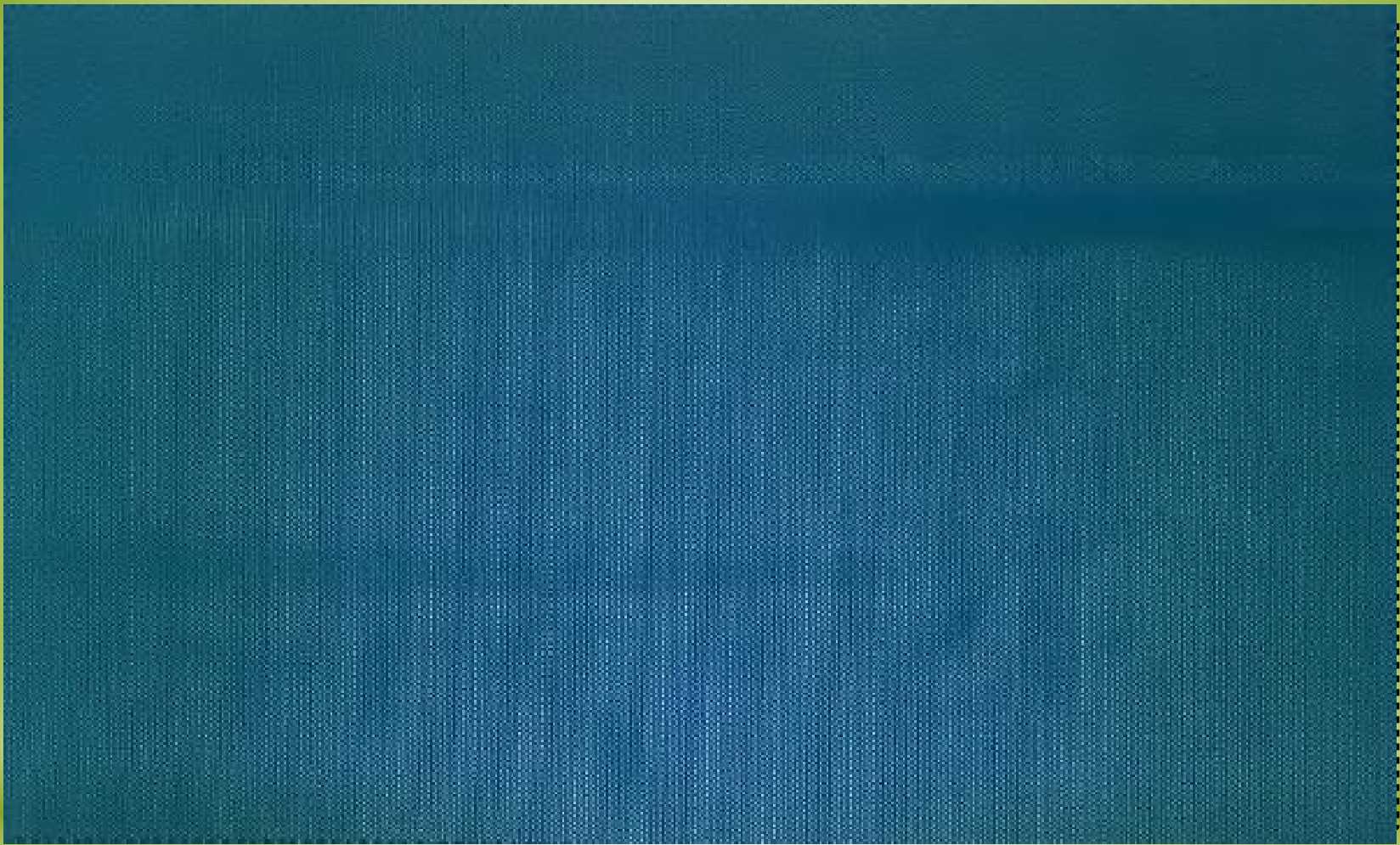


FABRIC REFERENCE : ZA4091

COMPOSITION : 79% RECYCLED POLYESTER, 7% POLYESTER & 14% ELASTANE

WIDTH, WEIGHT : 152CM / 160G/M2

PRODUCT, GG : AIRTEX JACQUARD 28GG



FABRIC REFERENCE : WB3104

COMPOSITION : 93% RECYCLED POLYESTER & 7% ELASTANE

WIDTH, WEIGHT : 152CM / 100G/M2

PRODUCT, GG : MESH 32GG



FABRIC REFERENCE : ZB6070

COMPOSITION : 75% RECYCLED POLYESTER & 25% ELASTANE

WIDTH, WEIGHT : 147CM / 220G/M2

PRODUCT, GG : INTERLOCK 32GG



FABRIC REFERENCE : ZB6057

COMPOSITION : 64% RECYCLED POLYESTER & 36% ELASTANE

WIDTH, WEIGHT : 150CM / 270G/M2

PRODUCT, GG : INTERLOCK 32GG

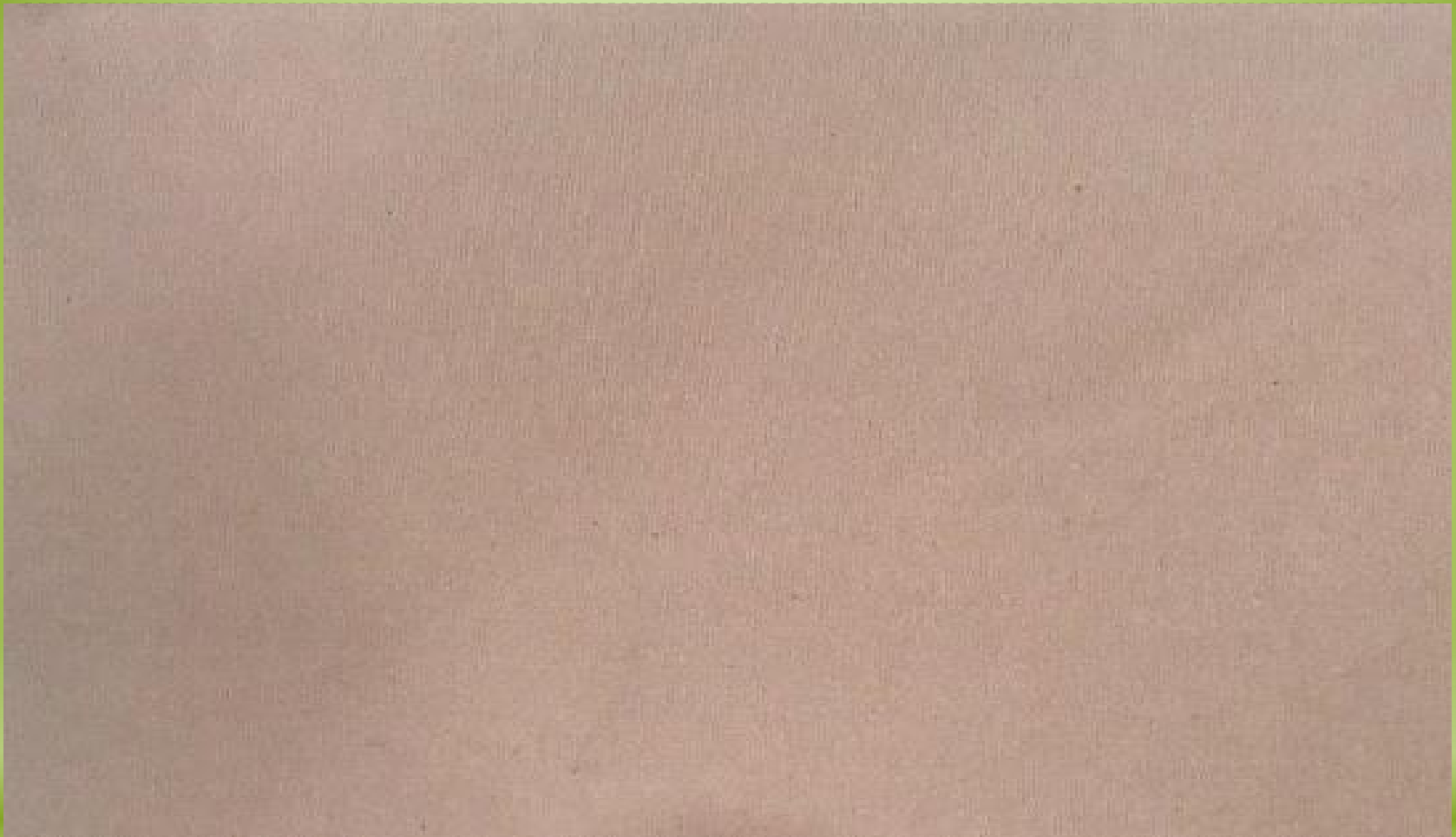


FABRIC REFERENCE : ZD6072

COMPOSITION : 75% RECYCLED POLYESTER & 25% ELASTANE

WIDTH, WEIGHT : 124CM / 205G/M2

PRODUCT, GG : INTERLOCK 40GG



FABRIC REFERENCE : ZD6087

COMPOSITION : 72% RECYCLED POLYESTER & 28% ELASTANE

WIDTH, WEIGHT : 152CM / 140G/M2

PRODUCT, GG : INTERLOCK 40GG

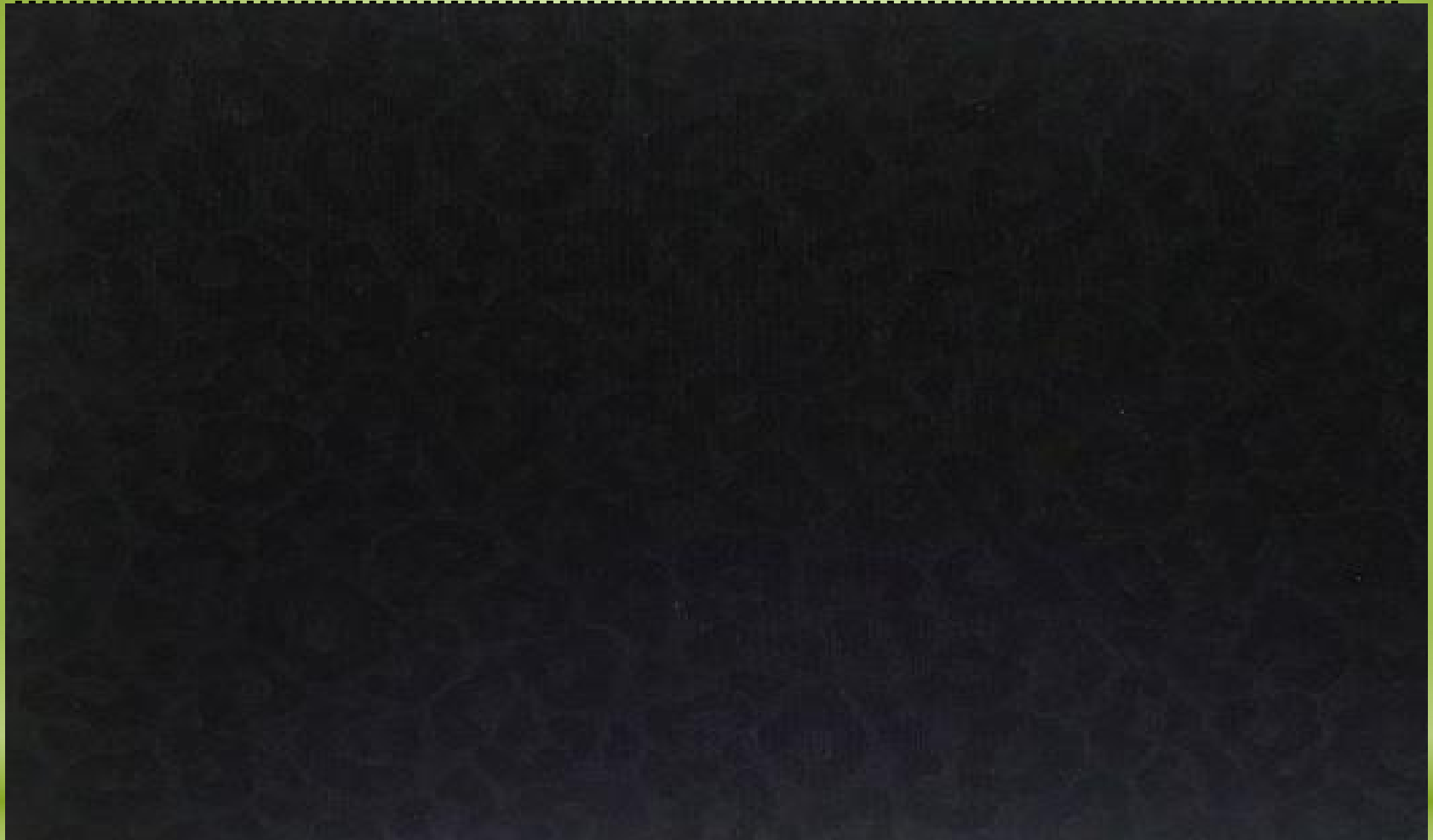


FABRIC REFERENCE : ZH1832

COMPOSITION : 83% RECYCLED POLYESTER & 17% ELASTANE

WIDTH, WEIGHT : 140CM / 160G/M2

PRODUCT, GG : JERSEY 36GG



FABRIC REFERENCE : ZA6043

COMPOSITION : 75% RECYCLED POLYESTER & 25% ELASTANE

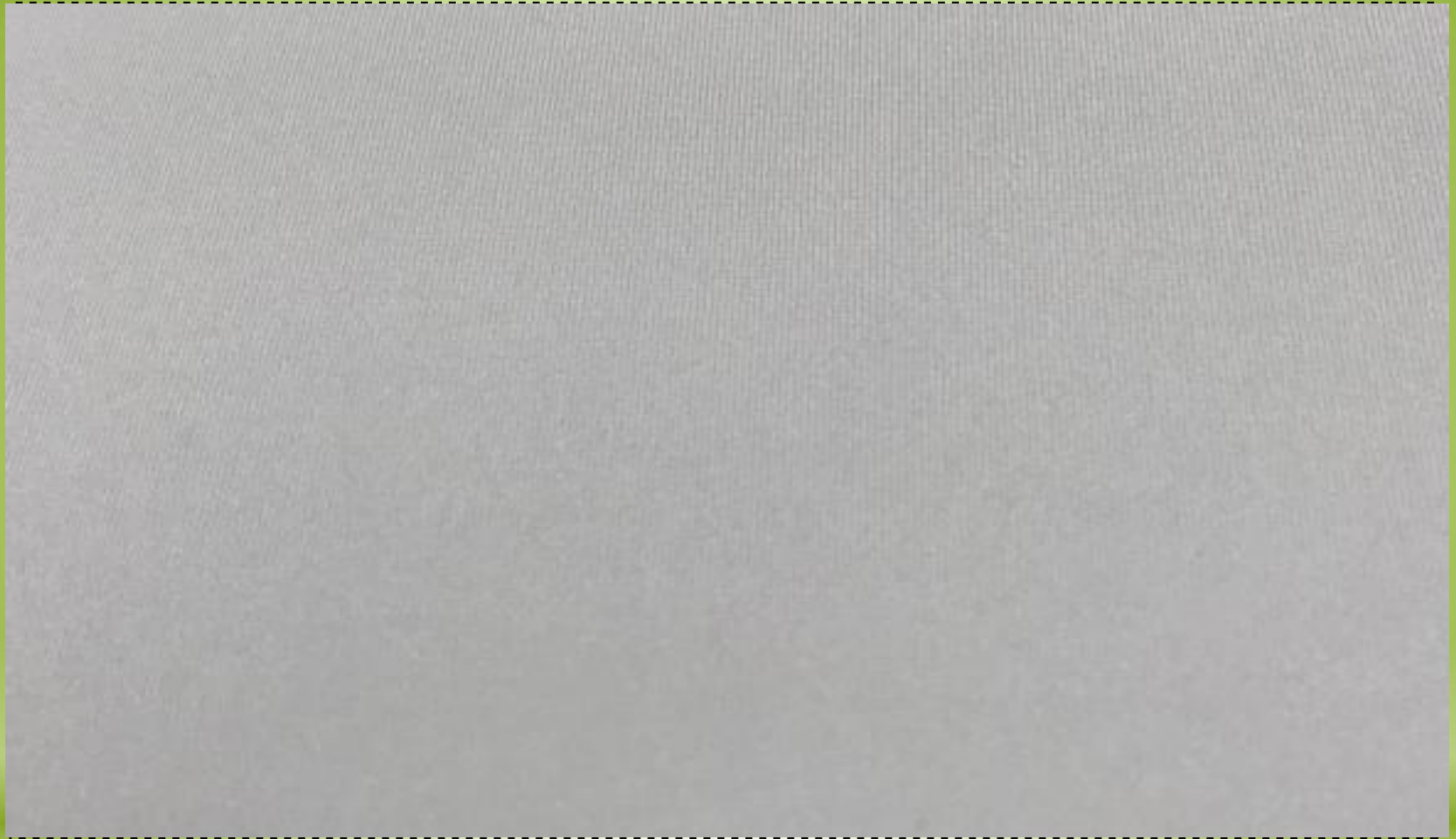
WIDTH, WEIGHT : 135CM / 225G/M2

PRODUCT, GG : INTERLOCK 28GG

RECYCLED ELASTANE

As part of our ongoing commitment to a more sustainable future, Billion Rise is proud to present fabrics containing 100% pre-consumer recycled elastane.





FABRIC REFERENCE : KFZB1889

COMPOSITION : 89% RECYCLED POLYESTER & 11% RECYCLED ELASTANE

WIDTH, WEIGHT : 147CM / 220G/M2

PRODUCT, GG : JERSEY 32GG



FABRIC REFERENCE : ZA6088

COMPOSITION : 86% RECYCLED POLYESTER & 14% RECYCLED ELASTANE

WIDTH, WEIGHT : 147CM / 190G/M2

PRODUCT, GG : INTERLOCK 28GG

RECYCLED NYLON

As part of our commitment to sustainability we have developed fabrics using only GRS approved recycled nylon yarn made from pre-consumer industrial waste. This helps to conserve petroleum resources.



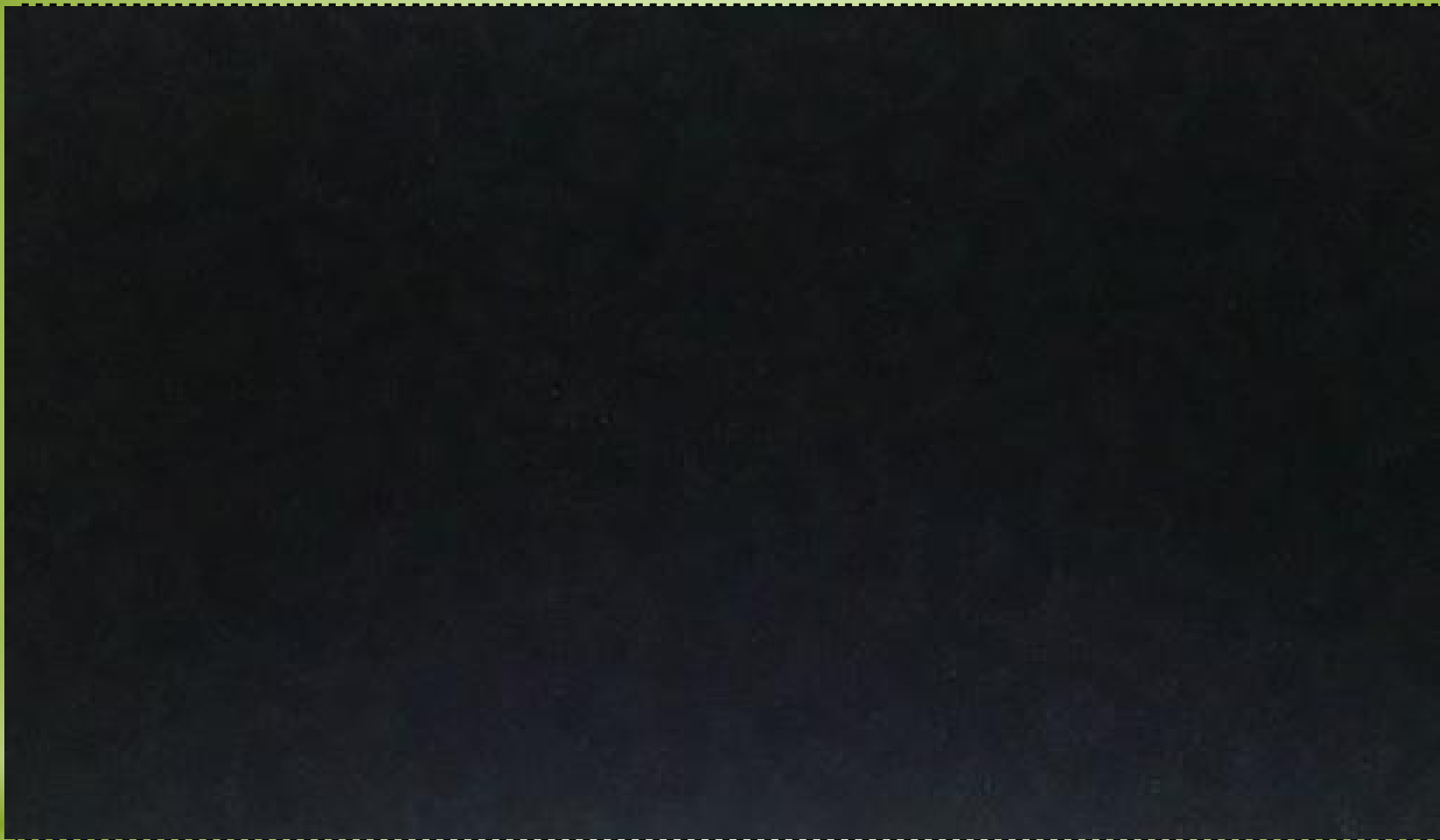


FABRIC REFERENCE : WB3103

COMPOSITION : 92% RECYCLED POLYAMIDE & 8% ELASTANE

WIDTH, WEIGHT : 152CM / 100G/M2

PRODUCT, GG : MESH 32GG



FABRIC REFERENCE : WH1585

COMPOSITION : 82% RECYCLED POLYAMIDE & 18% HIGHCLO ELASTANE

WIDTH, WEIGHT : 152CM / 190G/M2

PRODUCT, GG : TRICOT 36GG

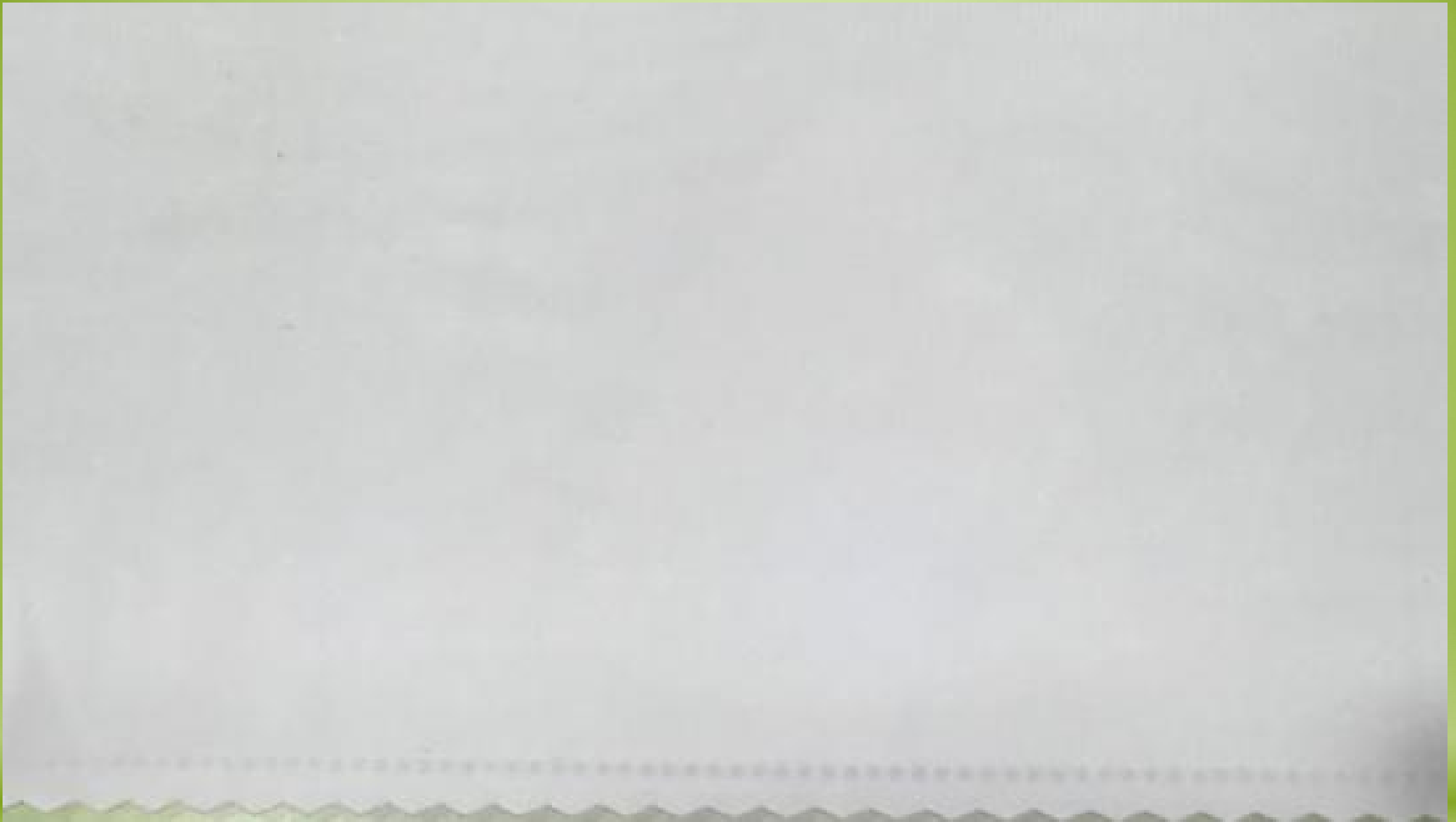


FABRIC REFERENCE : ZH1816

COMPOSITION : 84% RECYCLED POLYAMIDE & 16% ELASTANE

WIDTH, WEIGHT : 140CM / 120G/M2

PRODUCT, GG : JERSEY 36GG



FABRIC REFERENCE : ZE1894

COMPOSITION : 80% RECYCLED POLYAMIDE & 20% ELASTANE

WIDTH, WEIGHT : 152CM / 140G/M2

PRODUCT, GG : JERSEY 44GG



FABRIC REFERENCE : ZH1884

COMPOSITION : 82% RECYCLED POLYAMIDE & 18% ELASTANE

WIDTH, WEIGHT : 152CM / 185G/M2

PRODUCT, GG : JERSEY 36GG

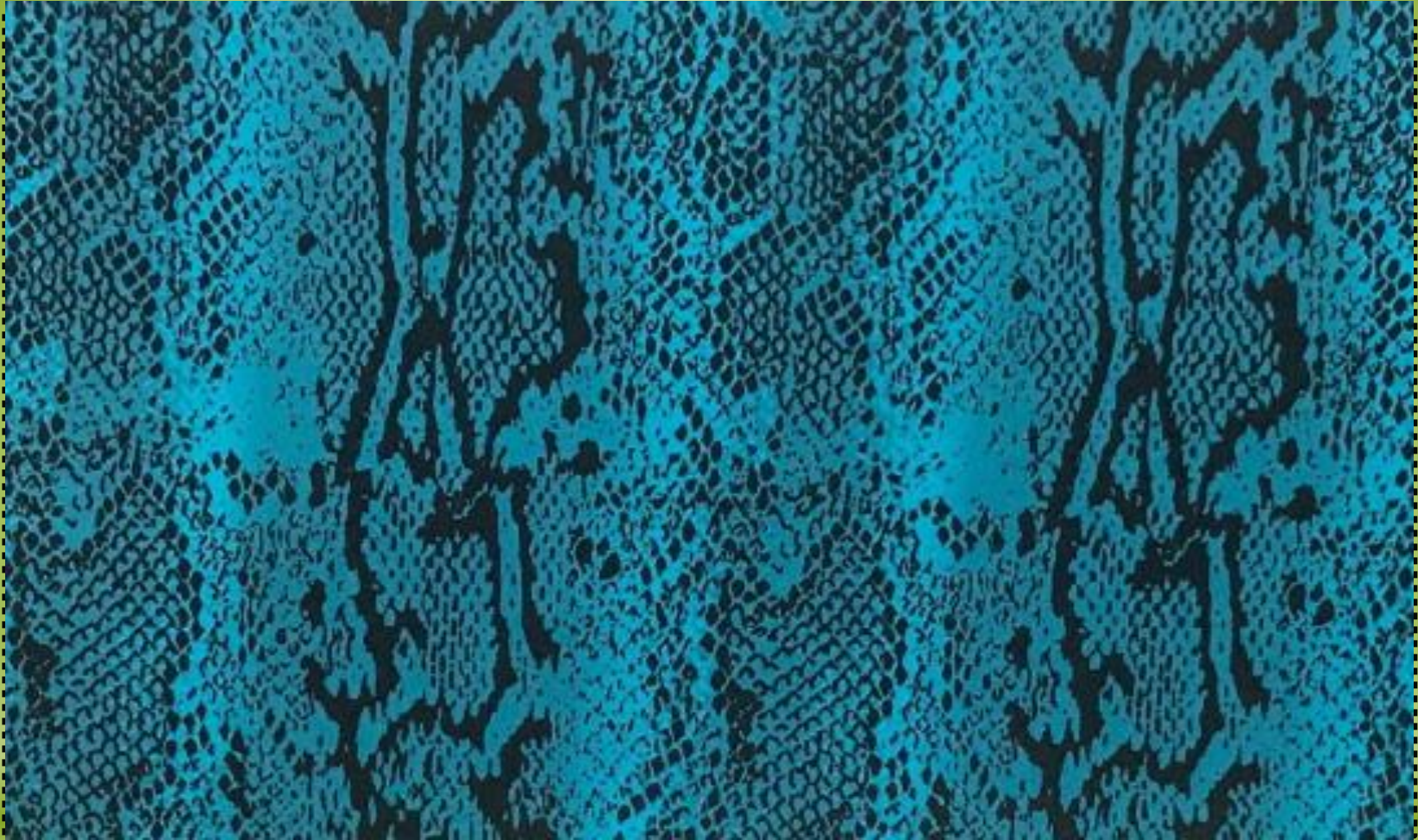


FABRIC REFERENCE : ZA8028

COMPOSITION : 83% RECYCLED POLYAMIDE & 17% ELASTANE

WIDTH, WEIGHT : 140CM / 140G/M2

PRODUCT, GG : INTERLOCK RIB 28GG



FABRIC REFERENCE : ZD7036

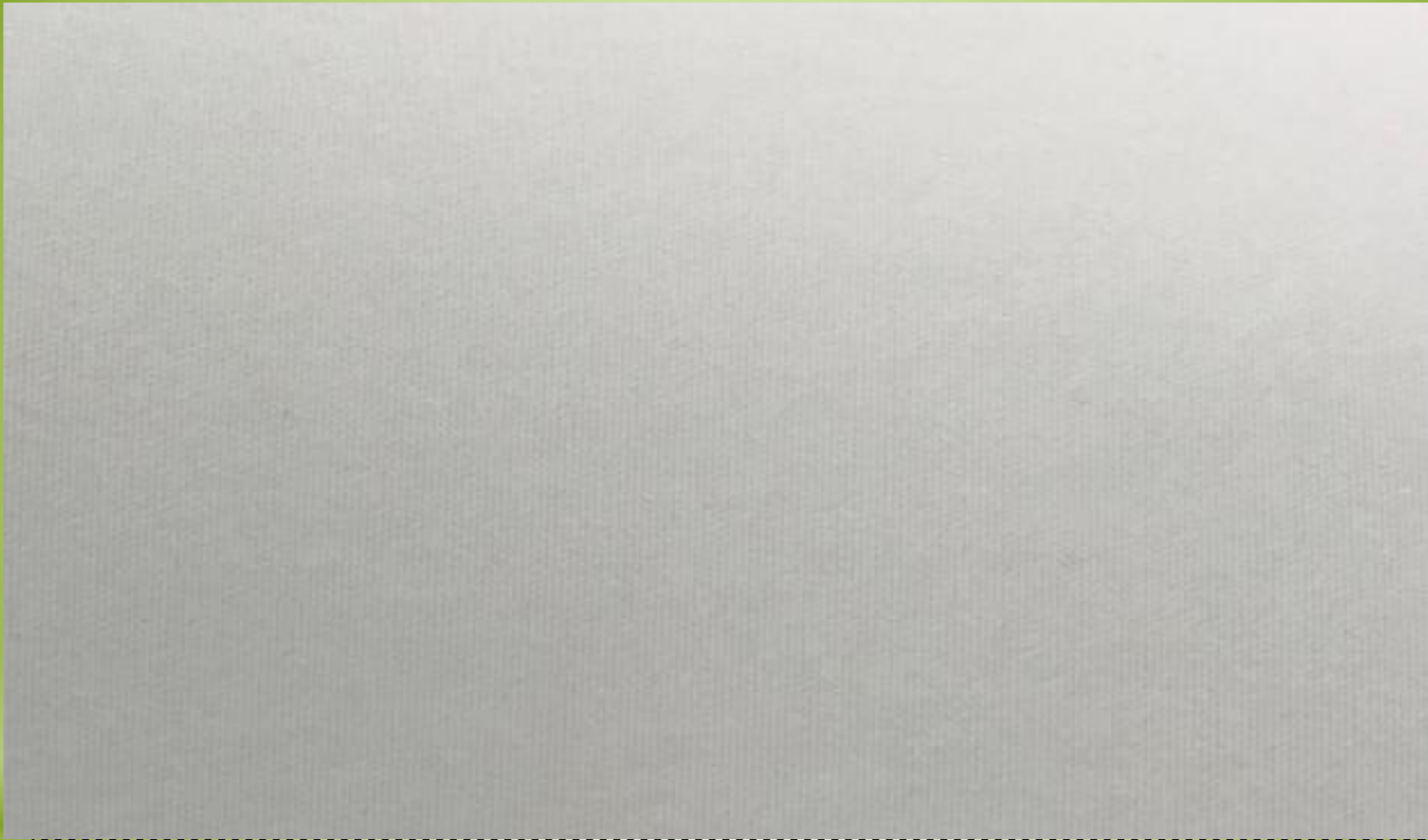
COMPOSITION : 56% RECYCLED POLYAMIDE, 14% POLYAMIDE & 30% ELASTANE

WIDTH, WEIGHT : 122CM / 350G/M2

PRODUCT, GG : SPACER 40GG

TERRYL

Terryl is a bio-based polyamide. It is the most advanced bio-manufactured material since the invention of petrol-based polyamide. Terryl is a polyamide 56 produced from renewable starchy plants.

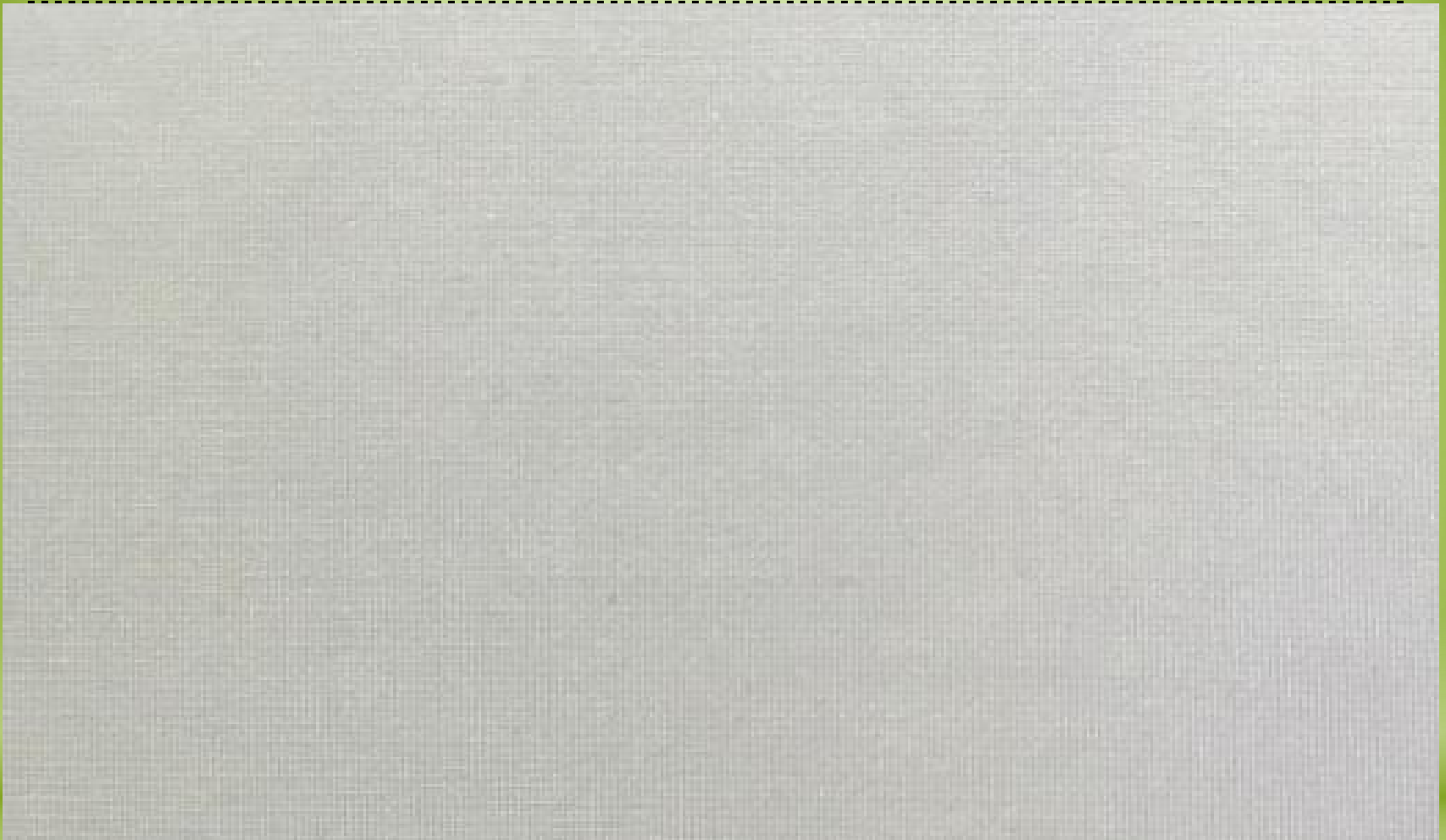


FABRIC REFERENCE : ZB4130

COMPOSITION : 34% TERRY, 53% POLYAMIDE, 13% ELASTANE

WIDTH, WEIGHT : 160CM / 250G/M2

PRODUCT, GG : JERSEY 32GG



FABRIC REFERENCE : ZH1904

COMPOSITION : 92% TERRYL, 8% ELASTANE

WIDTH, WEIGHT : 147CM / 170G/M2

PRODUCT, GG : JERSEY 36GG

CONTACT DETAILS

Manufacturing:

Guang Dong Billion Union Textile
Co. Ltd.

No. 2 Tangtang East Section, 106
National Road, Tangtang Town,
Fogang County, Qingyuan City,
Guangdong, 511675

Tel: (86) 763-420-1688

Fax: (86) 763-420-1633

Sales and Marketing:

Billion Rise Knitting (H.K.) Ltd.

Units C., 8/Floor

Shun Cheung Industrial Building, 26

Wing Hong Street, Cheung

Sha Wan,

Kowloon, Hong Kong.

Tel:(852) 2310 8982

Fax:(852) 2310 9300

Website:

www.billion-holding.com

www.butex.com.cn



兆升針織
billion rise knitting